

Thornton Beck Group

Improving water quality and
protecting our village



Thornton Beck Group

Supported by the Parish Council & working with

- **North Yorkshire County Council**
- **Ryedale District Council**
- **Environment Agency**
- **North York Moors National Park**
- **Internal Drainage Board**
- **Forestry Commission**
- **Local volunteers**

The beck is one of our great assets Loved by residents and tourists alike



Irish Bridge at Victory Mill



Iconic symbol of Thornton le Dale

Types of flooding

Thornton-le-Dale is at risk from three types of flooding

River bank bursts



Gipsy Spring



Flash Floods



All types have the potential to cause residents and business significant cost and hardship

River bank bursts

Scenes from 1999 / 2000



View of Priestmans Lane from Victory Mill

Gipsy springs

Rig and Furrow field at Manor Farm.



1991

Surface Water Flash Floods

Properties and business flooded



August 2012

How do we prevent and protect from this sort of deluge?



Prevention

- Adequate drainage system
- Maintenance of river bed
- Upstream management – slowing the flow
- Prevention of silt and weed cycle
- Good farming and forestry practice
- Planning awareness
- Regular maintenance of drains
- Local knowledge
- Signs and signals
- Emergency response team

River Bed Maintenance

Spring 2015

Despite the dry spring, water level is very high due to weed and silt.



January 2016

After heavy rain the beck is actually lower than the dry spring time level.



River Bed

1989 showing a clear river bed.

2012 Weed traps silt and the silt encourages weed growth.

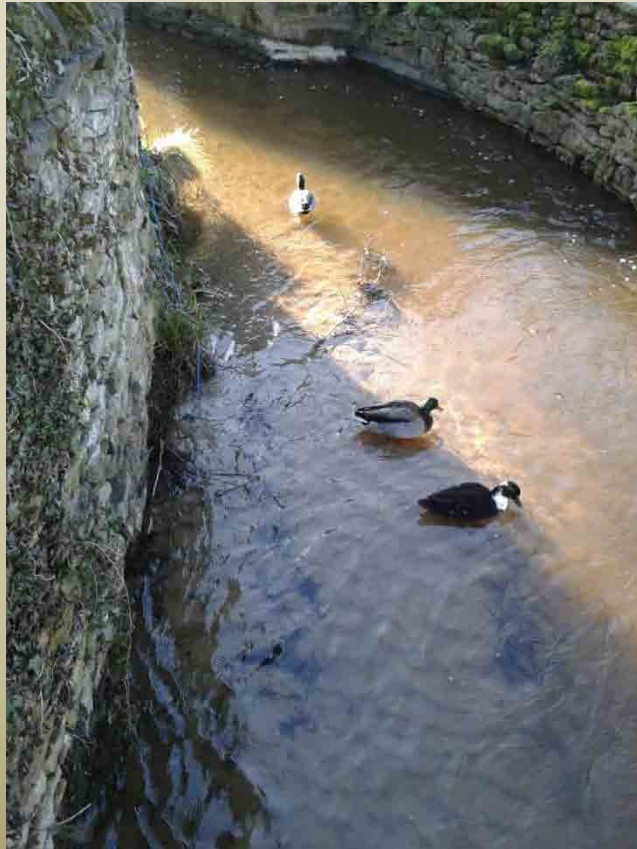


Difference in level after the back was returned to previous level by removing weed and silt.



The siltation issue

Ducks now walking on new sand bank by The Forge where they previously swam.



New sandbank on Beck Isle outside Manor Farm gate



Siltation Cycle

Silt deposited after heavy rain encourages growth of weed. Weed traps more silt and the cycle continues.



Not a pretty sight in a tourist village



Siltation after December 2015 heavy rainfall



Silt deposits create deep channels making it difficult for riparian owners to manage their part of the water course and their property

Before & After



August 2013 Weed Cleared by Thornton Dale Parish Council

Prevention better than cure



Drainage and maintenance



Limekiln Lane

Drainage Culverts need regular maintenance to prevent silt running directly into the river



South Lane

Good farming and forestry practice

Prevention is better than cure

We need the co-operation of everyone



Left : example within the village

Right: example above the village

Upstream is critical to addressing siltation issues

Slow the Flow



Local knowledge

Identification of the problems requires support from all associated authorities



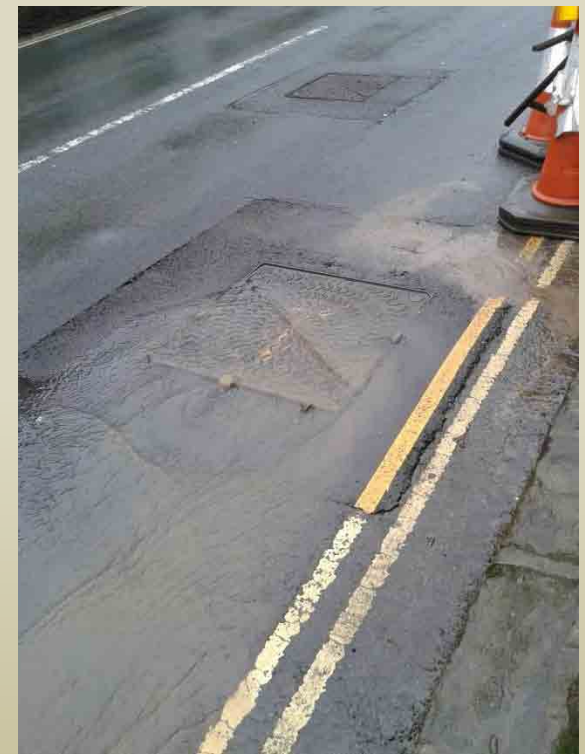
Church Lane
below and above
problem area

Planning awareness

A photograph of a residential property featuring a stone retaining wall and a flat bridge structure over a stream. The water is murky and appears to be backed up behind the bridge. The surrounding area includes green grass, trees, and a house in the background.

Flat bridge without capacity has the potential to back up water behind it.

10 years is too long to wait for a result!



Silt clearly visible in the water running from this drain, the subject of failed repairs over many years.

Riparian Duties

A photograph of a man with white hair, wearing a grey sweater and blue trousers, standing in a river. He is using a long-handled rake to clear debris from the water. The river is surrounded by dense, tall grasses and reeds. In the background, there is a wooden fence and a building with a metal railing. The water is murky and brown.

**“Living on the Edge”
a guide to your rights and
responsibilities of riverside ownership**

Everyone Benefits!

- River is cleaner and provides a better environment
- Greater resilience to potential flooding incidents
- Prevention of Highways erosion
- Our village looks at its best

Thornton Beck Group

